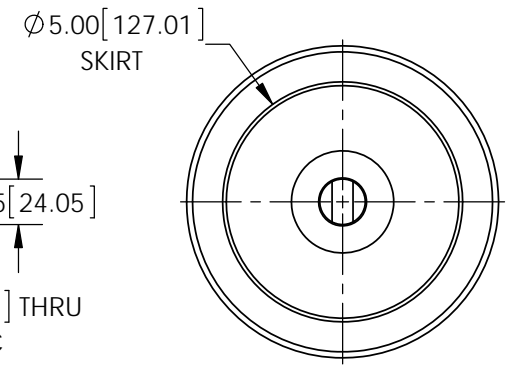
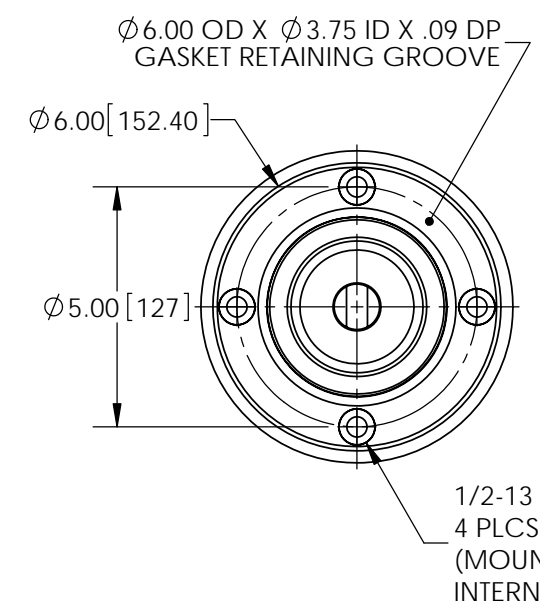
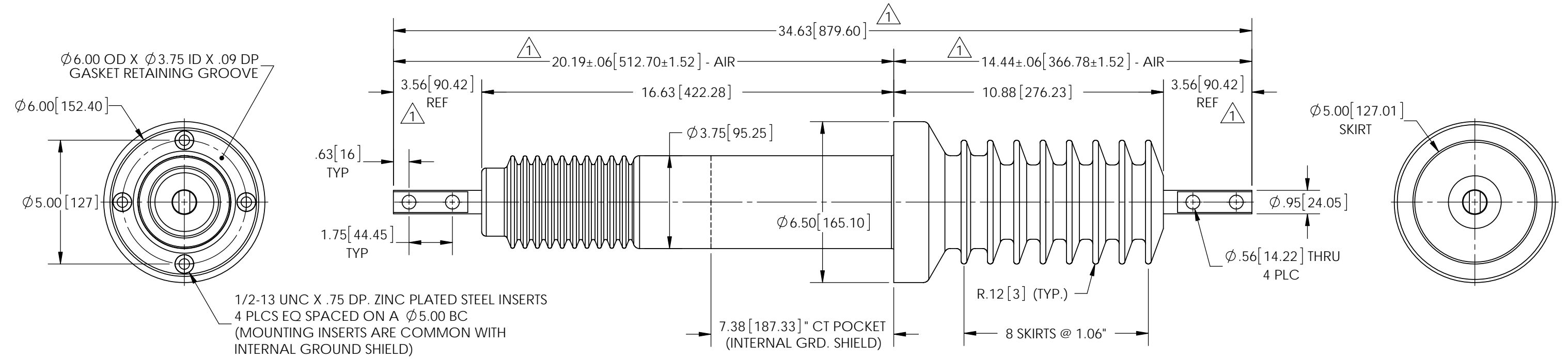
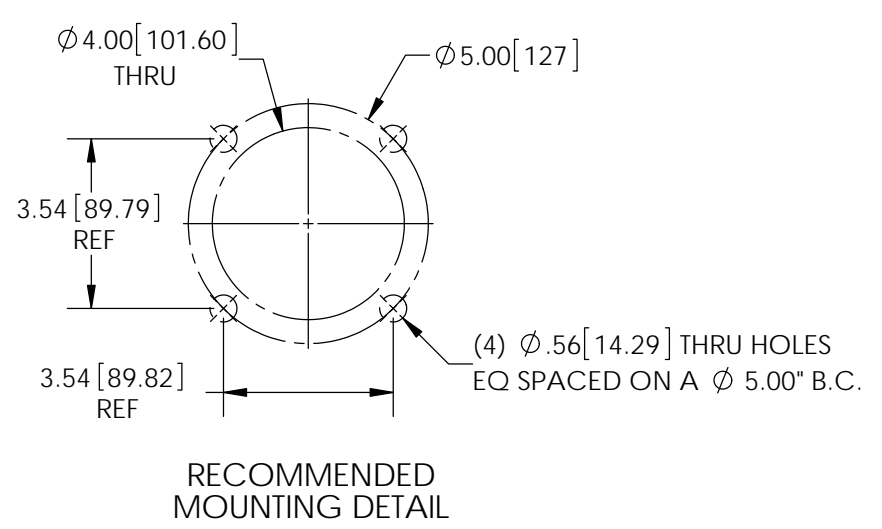


REVISIONS					
REV.	DATE	ECN #	DESCRIPTION	BY	APP'D
1	6/10/2015	HJ15-123	CHG'D DIM, WAS 34.00-TO-34.63, WAS 19.88-TO-20.19, WAS 14.13-TO-14.44, WAS 3.25-TO-3.56	TJF	BLB



- NOTES:**
1. ALL CONTACT SURFACES TO BE CLEAN & FREE FROM FLASH
- MATERIAL:**
1. CYCLOALIPHATIC EPOXY (U.V. EXPOSED), COLOR: GREY
2. HD ETP C11000 GRADE COPPER, TIN PLATED
- SPECIFICATIONS:**
1. MANUFACTURED IN ACCORDANCE WITH IEEE C57.19.01-2000
2. RATED VOLTAGE 25kV
3. POWER FREQUENCY WITHSTAND 60kV
4. BASIC IMPULSE LEVEL 150KV
5. NOMINAL CURRENT RATING 600 AMPS
6. CREEP DISTANCE 22.5"/572 mm (23 mm/kV)
7. TEMPERATURE CLASSIFICATION..... -50°C TO +105°C



RECOMMENDED MOUNTING DETAIL

PROPRIETARY AND CONFIDENTIAL
THE INFORMATION CONTAINED IN THIS DRAWING IS THE SOLE PROPERTY OF H-J INTERNATIONAL, INC. ANY REPRODUCTION IN PART OR AS A WHOLE WITHOUT THE WRITTEN PERMISSION OF H-J INTERNATIONAL, INC. IS STRICTLY PROHIBITED.

TOLERANCES (EXCEPT AS NOTED)
ONE PLACE MM ±1.50
TWO PLACE MM ±0.75
TWO PLACE DEC. ±.060
THREE PLACE DEC. ±.030
FRACTIONS ± 1/16"
ANGLES 2°

BREAK ALL SHARPS UNLESS OTHERWISE NOTED



H-J INTERNATIONAL, INC.
3010 HIGH RIDGE BLVD, HIGH RIDGE, MO. 63049 USA
PHONE 1-636-677-3421 FAX 1-636-376-1915

POWER APPARATUS BUSHING
25kV / 600A

APPROVED BY	DATE
CHECKED BY	DATE
DRAWN BY TJF	DATE 4/20/15
TOOL NO.	T20-430-0
PRODUCT GRP.	2000 SERIES

DRAWING NO.	20-430-001				
SCALE	1:4	SIZE	B	REV. 1	SHEET 1 OF 1